



March 27, 2024

The Educational Landscape of Buncombe County

Introductions



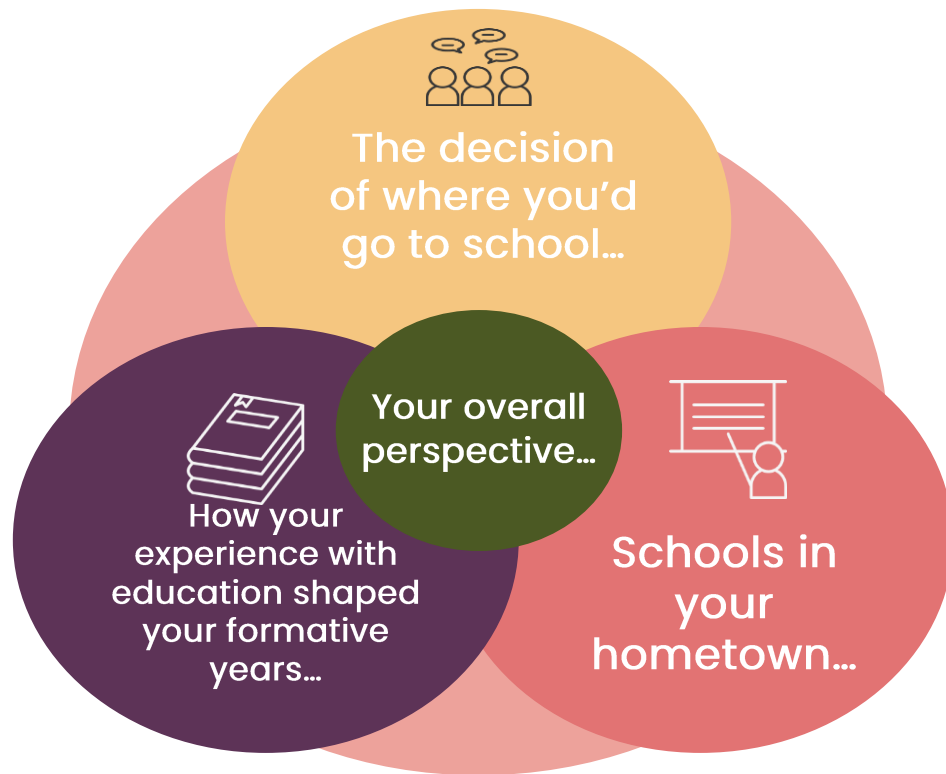
**Sarah Jean
Smith**
School Consultant,
Asheville, NC

Connector:

How did your family choose school(s)?

How did that form your perspective of education?

How did your view of education and its importance in your life come to be formed?



Our Learning for Today

I'd love for today's session to be driven by your needs and curiosities. Much of the information about which districts serve which areas and the ratings on schools can be found online, so we will talk bigger picture and creative solutions!

Agenda

Connector: Reflecting on Education's Place

The Educational Landscape of Asheville

- Traditional/Public Schools
- Charter and Independent Schools

Families with Special Needs

The Intersection of Real Estate and Schooling (Maps, Resources, etc.)



Buncombe County Schools...

Regions:

*DARA

North Buncombe

Erwin

Enka

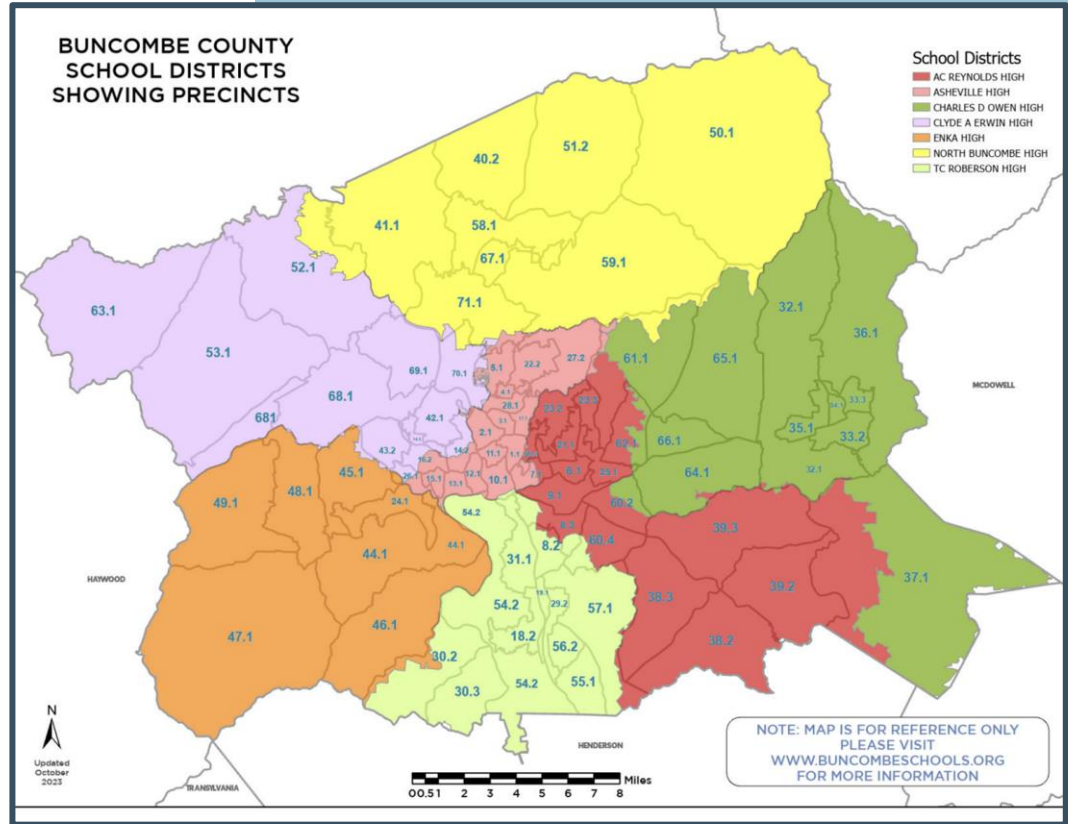
Roberson

Reynolds

Owen

Nesbitt Academy

Early College



Spanish Dual Language Programs

Every district in BCS has a dual language program...

- Avery's Creek Elementary
- Candler Elementary
- Eblen Intermediate
- Enka Intermediate
- Glen Arden Elementary
- Koontz Intermediate
- North Buncombe Elementary
- North Windy Ridge Intermediate
- Oakley Elementary
- W.D. Williams Elementary
- West Buncombe Elementary

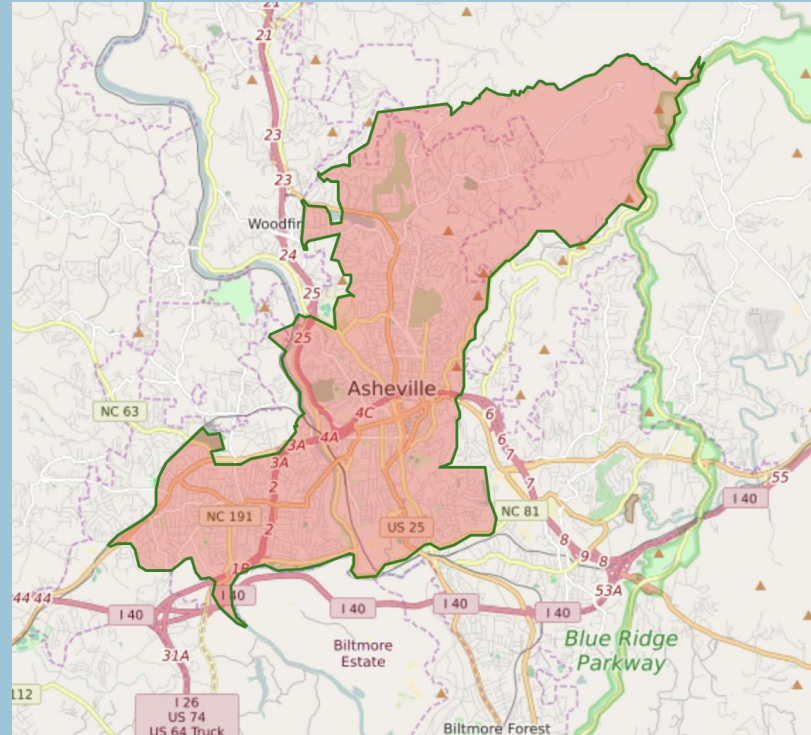


Asheville City Schools....

ACS' elementary schools all act as [magnet programs](#), giving kids the choice to focus on:

- Arts
- STEAM
- Global Issues
- Ecology
- Experiential Learning

Asheville High School also houses SILSA (School of Inquiry and Life Sciences at Asheville)



Charter Schools in Our Area....

- Fern Leaf (K-12)
- FSI (5-12)
- IC Imagine (K-12)
- Evergreen (K-8)
- Art Space (K-8)
- Mountain City Public Montessori (K-8)
- PEAK Academy (K-5)



Charter School Lotteries

Step #1

Enrollment and applications are totally free and open to the public! So it doesn't hurt to just apply.

Step #2

Most lotteries open up in January and then they 'pull names' by mid-April.

Step #3

Many families end up on the 'waitlist' in April, but wait until August to see who actually takes their spot(s).

Step #4

When school finally starts in August, the spots are all finalized, and you can see if you've moved into an open spot.

Independent (Private) Schools

Montessori Schools

K-12 Schools

Religious Schools

Boarding Schools

Holistic Schools

Therapeutic Schools (more on this later!)

Outdoor Schools

[SCHOOL VOUCHERS](#)



Preschools....

Get on the
waitlist
before you
get
pregnant!

Montessori Schools
Jewish Community Center
Christian/Religious Preschools
Outdoor Preschools
Spanish Academy of Asheville
Asheville Academy
Childcare Network
Nanny shares, etc.



Colleges, Universities, Continuing Ed....

Just in
case
families
are
thinking
ahead...

AB-Tech

Lenoir Rhyne

UNCA

WCU

Daoist Traditions

Massage School(s)

Warren Wilson

Montreat



Asheville's Educational Landscape

Key Takeaways...



Families with Special Needs...

- Testing Facilities
- IEPs and 504s
- Specialized Schools
- Charter Schools' Response



Therapeutic Boarding Schools...

These usually attract families from outside of our area, but...

Many wilderness therapy programs in the area help high-needs students with mental health and addiction issues. Many of those students then go to local schools that help them continue their studies in a controlled environment. Some examples:

- Black Mountain Academy
- Wolf Creek Academy
- Lake House Academy
- Arthur Morgan
- Timber Song



Where Real Estate Meets Education

Giving guidance, easing worries,
and supporting your clients....



Questions?



**What from this
information resonates?
What are you wondering?
What are the implications
moving forward?**